



2011 Fiscal Year Report

# James City County Police Department

Chief of Police - Emmett Harmon

[www.jccEgov.com/Police](http://www.jccEgov.com/Police)



## Protection & Prevention Through Professionalism



VLEPSC Accredited Agency

Virginia Law Enforcement Professional Standards Commission

# Mission Statement

The mission of the James City County Police Department is to perform our duties and fulfill our responsibilities of enforcing the law, preserving the peace, and providing police services so that it improves the quality of life for all citizens within our jurisdiction.

# Table of Contents

<b>Contents</b>	<b>Page</b>
Mission Statement . . . . .	2
Map of Police Zones . . . . .	4
Organizational Chart . . . . .	5
Personnel . . . . .	6
Budget Comparison . . . . .	6
Part I Crime Time Clock . . . . .	7
Part I Comparison FY2005-FY2011 . . . . .	8
IBR Group A Offenses and Clearance . . . . .	9
IBR Group A & B Offenses (Graphs) . . . . .	10
Arrests (Adult & Juvenile Comparison) . . . . .	11
Citizen Calls For Service 5 Year Comparison . . . . .	12
Citizen Calls For Service Yearly Comparison . . . . .	13
Grants . . . . .	14

# James City County Police - Zone Map

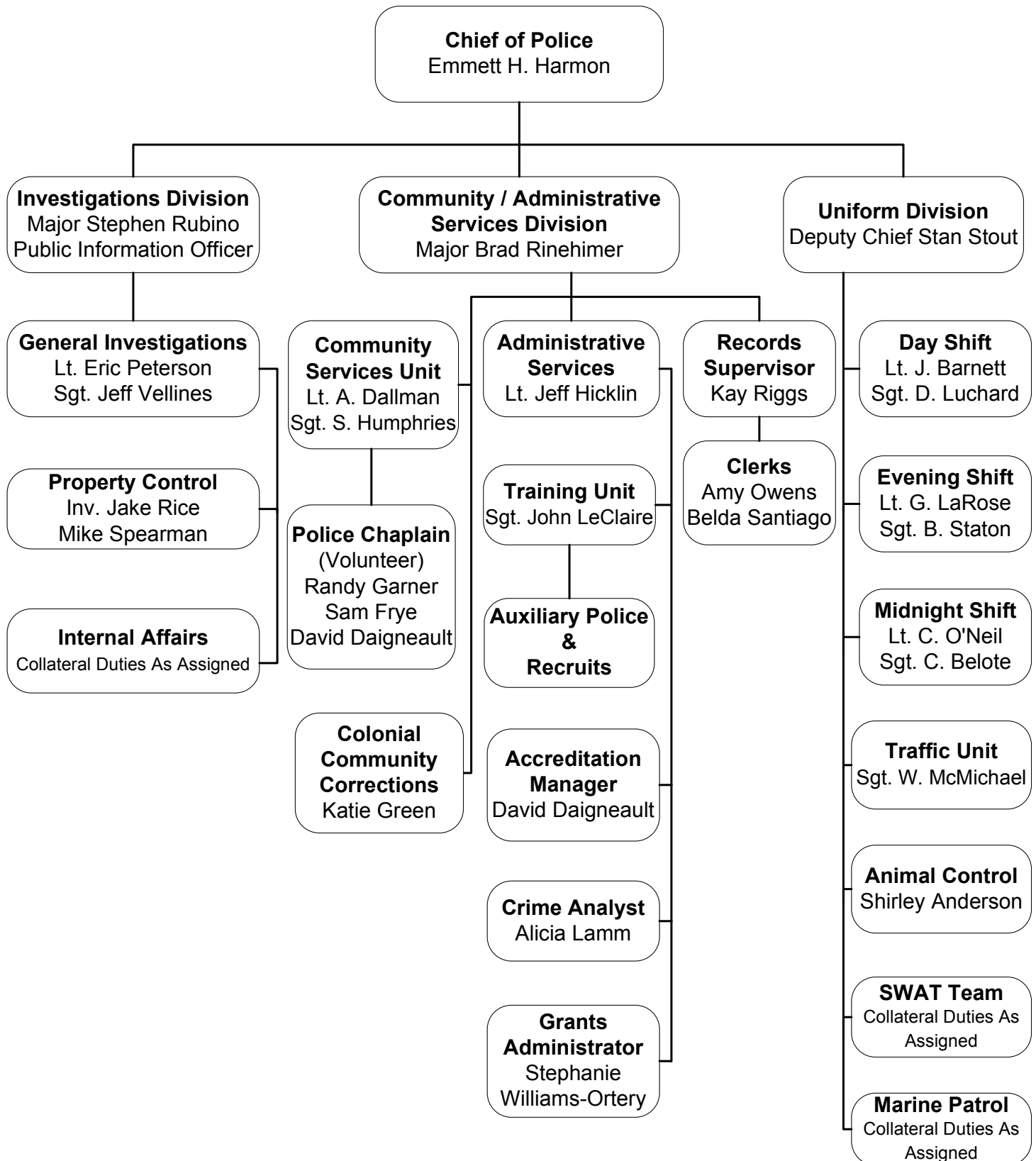


This drawing is neither a legally recorded map nor a survey and is not intended to be used as such. The information displayed is a compilation of records, information, and data obtained from various sources, and James City County is not responsible for its accuracy or how current it may be. If discrepancies are found, please contact the Real Estate Assessment Division of James City County, Mapping/GIS Section.



# Organizational Chart

## James City County Police Department



# Personnel & Budget

Position	Number of Personnel
<b>Sworn Police:</b>	
Chief	1
Deputy Chief	1
Major	2
Lieutenant	6
Sergeant	7
Investigator	16
Patrol Officer	47
Community Services	10
Traffic Unit	3
Part Time & Auxiliary	6
Recruit	0

**Sworn Total : 99**

Full Time: 93  
Part Time: 2  
Volunteer: 4

<b>Animal Control:</b>	
Animal Control Supervisor	1
Animal Control Officer	1
On-Call (Part-Time)	0

**Animal Control Total: 2**

Position	Number of Personnel
<b>Civilian:</b>	
Accreditation Manager (Part-Time)	1
Crime Analyst	1
Grants Administrator	1
Police Records Supervisor	1
Police Records Clerk	2
Property Control (Part-Time)	1
Chaplain (Volunteer)	3

**Civilian Total: 10**

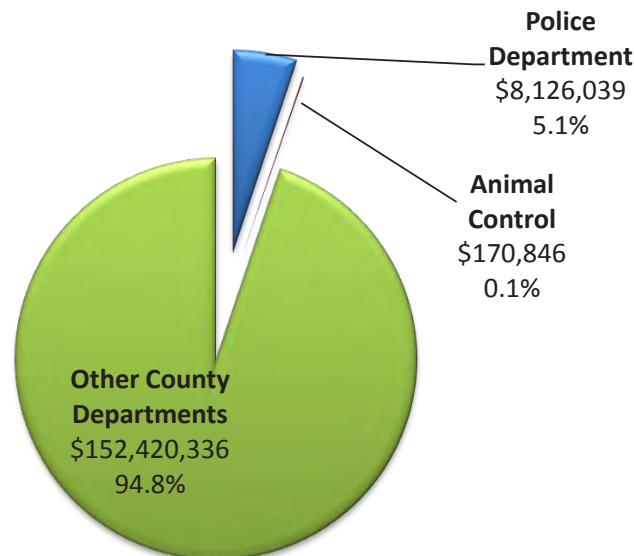
Full Time: 5  
Part Time: 2  
Volunteer: 3

<b>Colonial Community Corrections:</b>	
Director	1
Administrative Services Coordinator	1
Secretary	1
Probation Officer	8
Pretrial Officer	1
Pretrial Investigator	2
Probation Officer Assistant	1
Case Coordinator	1
Criminal Justice Planner	Vacant

**Colonial Community Corrections Total: 16**

Full Time: 12  
Part Time: 4

## FY 2011 Budget Total County Budget: \$160,717,221



# Part I Crime Clock

**FY 2011**

## Part I Crime Time Clock

**Total Known Part I Crime (1,071)**

1 every 8 hours 10 minutes

**Total Violent Crime (75)**

1 every 4 days 20 hours

**Homicide (0)**

**Rape (17)**

1 every 21 days 11 hours

**Robbery (18)**

1 every 20 days 6 hours

**Aggravated Assault (40)**

1 every 9 days 3 hours

**Total Property Crime (996)**

1 every 8 hours 47 minutes

**Burglary (186)**

1 every 1 day 23 hours

**Larceny (763)**

1 every 11 hours 8 minutes

**Motor Vehicle Theft (31)**

1 every 11 days 18 hours

**Arson (16)**

1 every 22 days 19 hours

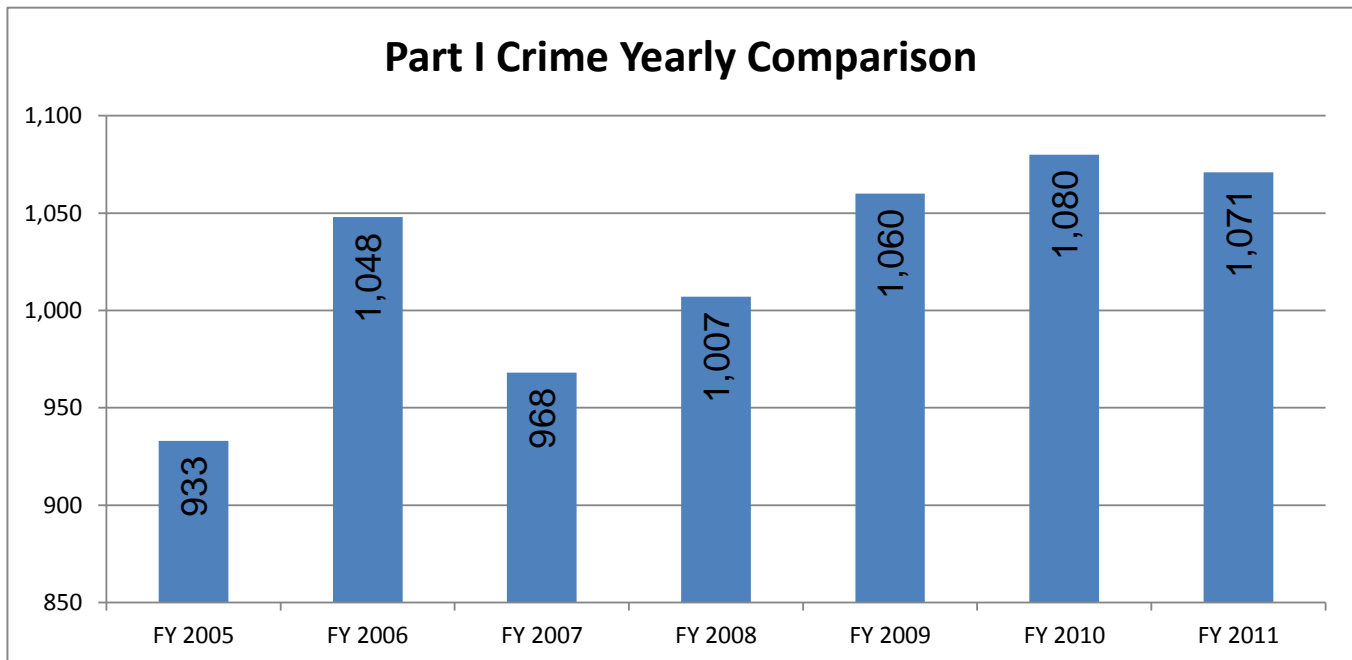


# Part I Yearly Comparison

FY 2005 to FY 2011

The FBI has classified Homicide, Rape, Robbery, Aggravated Assault, Burglary, Larceny, Motor Vehicle Theft, and Arson, as the eight most serious Property Crimes and Violent Crimes. These offenses are called "PART I" Crimes.

	FY 2005	FY 2006	FY 2007	FY 2008	FY 2009	FY 2010	FY 2011
Homicide	1	3	2	2	0	0	0
Forcible Rape	13	11	12	10	17	11	17
Robbery	12	18	21	14	15	13	18
Aggravated Assault	49	35	42	45	33	36	40
<b>TOTAL VIOLENT CRIME</b>	<b>75</b>	<b>67</b>	<b>77</b>	<b>71</b>	<b>65</b>	<b>60</b>	<b>75</b>
Burglary	120	183	151	181	188	178	186
Larceny	667	709	668	688	772	794	763
Motor Vehicle Theft	56	64	50	43	27	35	31
Arson	15	25	22	24	8	13	16
<b>TOTAL PROPERTY CRIME</b>	<b>858</b>	<b>981</b>	<b>891</b>	<b>936</b>	<b>995</b>	<b>1,020</b>	<b>996</b>
<b>Total Part I Crime</b>	<b>933</b>	<b>1,048</b>	<b>968</b>	<b>1,007</b>	<b>1,060</b>	<b>1,080</b>	<b>1,071</b>
Annual % Change		12.33%	-7.63%	4.03%	5.26%	1.89%	-0.83%
Crimes Per 1,000 Population	17	18	16	16	17	17	16
Population Estimate (2nd qtr)	56,463	58,893	60,867	62,400	63,100	63,999	67,101



\* Part I numbers are by IBR standards (each offense counted)

# IBR Group A and B Offenses

## IBR Offenses FY 2011

Incident Based Reporting (IBR) captures all actual (excluding unfounded) offenses known to police, which is different from Uniform Crime Reporting (UCR) where only the most serious crimes are captured by using the Hierarchy Rule. This report may not be identical to the information in the Crimes in Virginia report because of the reporting guidelines set by the state. By IBR standards all known crimes are either Group A or Group B Offenses. Clearances are reported only in Group A Offenses. The next sections show all known crimes by offense group.

<u>Total Group A Offenses:</u>	<b>2,765</b>
<u>Total Group B Offenses:</u>	<b>692</b>
<u>Total Offenses:</u>	<b>3,457</b>
<u>Total Police Reports:</u>	<b>3,502</b>

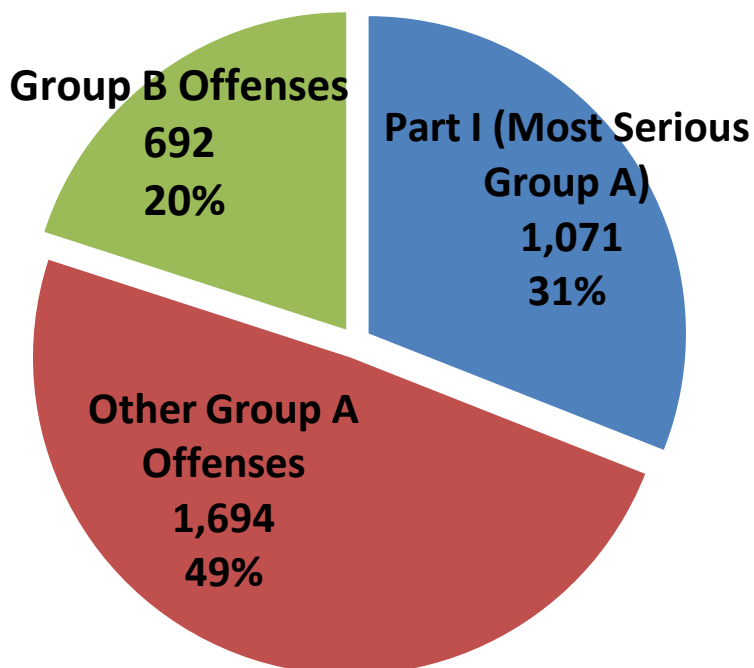
Group A Offenses	Actual Known Offenses	Cleared	Percent Cleared
<b>Arson</b>	<b>16</b>	<b>5</b>	<b>31.3%</b>
<b>Assault Offenses</b>	<b>679</b>	<b>597</b>	<b>87.9%</b>
Aggravated Assault	40	33	82.5%
Simple Assault	523	483	92.4%
Intimidation	116	81	69.8%
<b>Bribery</b>	<b>1</b>	<b>1</b>	<b>100.0%</b>
<b>Burglary/Breaking &amp; Entering</b>	<b>186</b>	<b>42</b>	<b>22.6%</b>
<b>Counterfeiting/Forgery</b>	<b>56</b>	<b>23</b>	<b>41.1%</b>
<b>Destruction/Damage/Vandalism of Property</b>	<b>474</b>	<b>118</b>	<b>24.9%</b>
<b>Drug/Narcotic Offenses</b>	<b>189</b>	<b>185</b>	<b>97.9%</b>
Drug/Narcotic Violations	181	177	97.8%
Drug Equipment Violations	8	8	100.0%
<b>Embezzlement</b>	<b>18</b>	<b>12</b>	<b>66.7%</b>
<b>Extortion/Blackmail</b>	<b>0</b>	<b>0</b>	<b>NC</b>
<b>Fraud Offenses</b>	<b>213</b>	<b>52</b>	<b>24.4%</b>
False Pretenses/Swindle/Confidence Game	63	19	30.2%
Credit Card/Automatic Teller Machine Fraud	95	19	20.0%
Impersonation	41	9	22.0%
Welfare Fraud	5	4	80.0%
Wire Fraud	9	1	11.1%
<b>Gambling Offenses</b>	<b>0</b>	<b>0</b>	<b>NC</b>
Betting/Wagering	0	0	NC
Operating/Promoting/Assisting Gambling	0	0	NC
Gambling Equipment Violations	0	0	NC
Sports Tampering	0	0	NC
<b>Homicide Offenses</b>	<b>0</b>	<b>0</b>	<b>NC</b>
Murder and Nonnegligent Manslaughter	0	0	NC
Negligent Manslaughter	0	0	NC
Justifiable Homicide	0	0	NC
<b>Kidnapping/Abduction</b>	<b>12</b>	<b>11</b>	<b>91.7%</b>
<b>Larceny/Theft Offenses</b>	<b>763</b>	<b>214</b>	<b>28.0%</b>
Pocket-picking	0	0	NC
Purse-snatching	0	0	NC
Shoplifting	141	83	58.9%
Theft from Building	171	47	27.5%
Theft from Coin-Operated Machine or Device	1	0	0.0%
Theft From Motor Vehicle	189	17	9.0%
Theft of Motor Vehicle Parts or Accessories	38	2	5.3%
All Other Larceny	223	65	29.1%
<b>Motor Vehicle Theft</b>	<b>31</b>	<b>12</b>	<b>38.7%</b>
<b>Pornography/Obscene Material</b>	<b>2</b>	<b>1</b>	<b>50.0%</b>
<b>Prostitution Offenses</b>	<b>0</b>	<b>0</b>	<b>NC</b>
Prostitution	0	0	NC
Assisting or Promoting Prostitution	0	0	NC
<b>Robbery</b>	<b>18</b>	<b>14</b>	<b>77.8%</b>

# IBR Group A and B Offenses (continued)

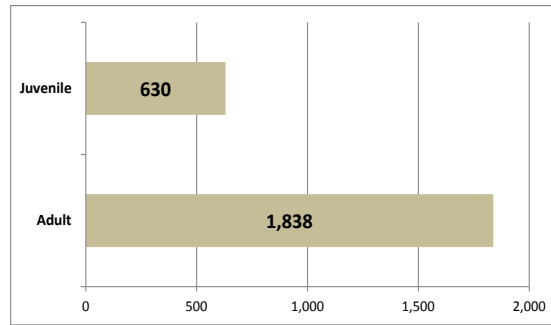
<b>Sex Offenses, Forcible</b>	<b>55</b>	<b>25</b>	<b>45.5%</b>
Forcible Rape	17	5	29.4%
Forcible Sodomy	6	2	33.3%
Sexual Assault With An Object	1	1	100.0%
Forcible Fondling(Child)	31	17	54.8%
<b>Sex Offenses, Nonforcible</b>	<b>0</b>	<b>0</b>	<b>NC</b>
Incest	0	0	NC
Statutory Rape	0	0	NC
<b>Stolen Property Offenses</b>	<b>8</b>	<b>8</b>	<b>100.0%</b>
<b>Weapon Law Violations</b>	<b>44</b>	<b>35</b>	<b>79.5%</b>
<b>Total Group A Offenses:</b>	<b>2,765</b>	<b>1,355</b>	<b>49.0%</b>
<b>Total Group A Incidents:</b>	<b>2,474</b>	<b>1,188</b>	<b>48.0%</b>

Group B Offenses	Actual Known Offenses
Bad Checks	5
Curfew/Loitering/Vagrancy Violations	24
Disorderly Conduct	49
Driving Under The Influence	Arrests Only
Drunkenness	46
Family Offenses, Nonviolent	51
Liquor Law Violations	79
Peeping Tom	1
Runaway	65
Trespass of Real Property	81
Conspiracy to Commit Group A Offenses	1
All Other Offenses	290
<b>Total Group B Offenses:</b>	<b>692</b>
<b>Total Group B Incidents:</b>	<b>421</b>

## Actual Known Offenses



# Arrests



Arrest Classification	Total	Adults Arrested	% Of Total	Juveniles Arrested	% Of Total
Kidnaping/Abduction	12	12	100%	0	--
Homicide Offenses	0	0	--	0	--
Sex Offenses, Forcible	14	7	50%	7	50%
Robbery	16	14	88%	2	13%
Assault Offenses	349	244	70%	105	30%
Arson	8	2	25%	6	75%
Extortion/Blackmail	0	0	--	0	--
Burglary/Breaking & Entering	66	44	67%	22	33%
Larceny/Theft Offenses	272	180	66%	92	34%
Motor Vehicle Theft	0	0	--	0	--
Counterfeiting/Forgery	12	12	100%	0	--
Fraud Offenses	39	35	90%	4	10%
Embezzlement	11	11	100%	0	--
Stolen Property Offenses	9	7	78%	2	22%
Destruction/Damage/Vandalism of Property	90	45	50%	45	50%
Drug/Narcotic Offenses	210	170	81%	40	19%
Sex Offenses, Nonforcible	2	1	50%	1	50%
Pornography/Obscene Material	7	2	29%	5	71%
Gambling Offenses	0	0	--	0	--
Prostitution Offenses	0	0	--	0	--
Bribery	1	1	100%	0	--
Weapon Law Violations	48	40	82%	8	17%
Bad Checks	0	0	--	0	--
Curfew/Loitering/Vagrancy Violations	40	0	--	40	100%
Disorderly Conduct	61	15	25%	46	75%
Driving Under The Influence	371	368	99%	3	1%
Drunkenness	177	174	98%	3	2%
Family Offenses, Nonviolent	8	7	88%	1	13%
Liquor Law Violations	161	116	72%	45	28%
Peeping Tom	0	0	--	0	--
Runaway	65	0	--	65	100%
Trespass of Real Property	102	61	60%	41	40%
Conspiracy To Commit Group 'A' Offenses	0	0	--	0	--
Conspiracy To Commit Group 'B' Offenses	0	0	--	0	--
All Other Offenses (except traffic)	317	270	85%	47	15%
<b>Arrest Total:</b>	<b>2,468</b>	<b>1,838</b>	<b>74%</b>	<b>630</b>	<b>26%</b>

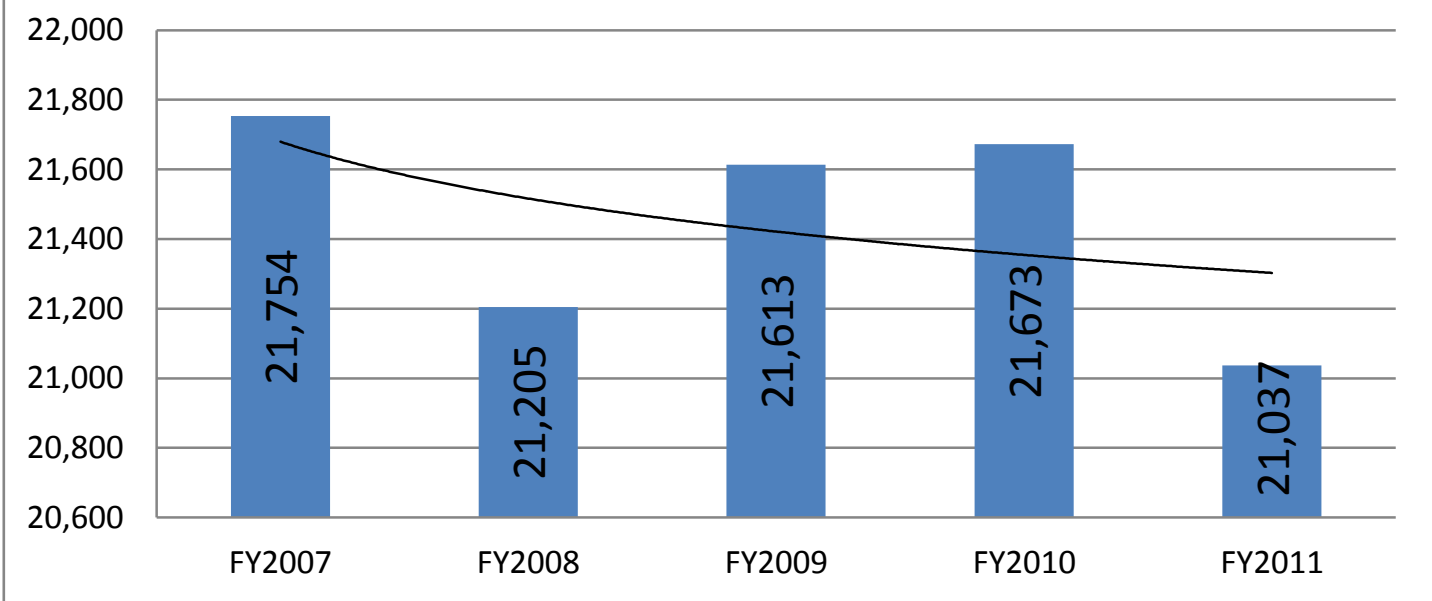
# Citizen Calls For Service 5 Year Comparison

<u>Month</u>	<u>FY2007</u>	<u>FY2008</u>	<u>FY2009</u>	<u>FY2010</u>	<u>FY2011</u>
July	1,905	2,066	2,035	2,064	1,921
August	1,917	1,997	1,913	1,996	2,021
September	1,851	1,704	1,814	1,829	1,755
October	1,723	1,869	1,889	1,858	1,806
November	1,695	1,747	1,653	1,843	1,664
December	1,762	1,539	1,874	1,805	1,695
January	1,655	1,610	1,656	1,625	1,487
February	1,506	1,511	1,470	1,334	1,443
March	1,862	1,729	1,719	1,726	1,743
April	1,853	1,688	1,716	1,722	1,864
May	1,950	1,832	1,896	1,967	1,850
June	2,075	1,913	1,978	1,904	1,788
<b>Total:</b>	<b>21,754</b>	<b>21,205</b>	<b>21,613</b>	<b>21,673</b>	<b>21,037</b>

**Change from previous year:**

-2.52%      1.92%      0.28%      -2.93%

## Calls For Service Fiscal Year Comparison



# Citizen Calls For Service Yearly Comparison

<u>Month</u>	<u>FY1988</u>	<u>FY1989</u>	<u>FY1990</u>	<u>FY1991</u>	<u>FY1992</u>	<u>FY1993</u>	<u>FY1994</u>	<u>FY1995</u>
July	1,138	1,138	1,153	1,150	1,303	1,304	1,378	1,452
August	1,117	979	1,185	1,167	1,210	1,303	1,376	1,413
September	1,044	938	1,045	1,158	1,111	1,148	1,303	1,352
October	921	881	1,016	983	983	1,141	1,279	1,261
November	875	875	976	958	1,052	1,042	1,155	1,184
December	915	830	903	929	1,001	1,059	1,164	1,181
January	763	789	927	890	976	971	1,077	1,151
February	739	717	785	824	893	955	1,073	1,025
March	832	927	892	917	1,032	1,071	1,227	1,313
April	875	953	954	958	1,088	1,168	1,335	1,222
May	886	992	1,070	1,046	1,224	1,362	1,422	1,393
June	902	963	1,091	1,150	1,186	1,346	1,310	1,426
	<b>11,007</b>	<b>10,982</b>	<b>11,997</b>	<b>12,130</b>	<b>13,059</b>	<b>13,870</b>	<b>15,099</b>	<b>15,373</b>
<b>Change from previous year:</b>		-0.23%	9.24%	1.11%	7.66%	6.21%	8.86%	

<u>Month</u>	<u>FY1996</u>	<u>FY1997</u>	<u>FY1998</u>	<u>FY1999</u>	<u>FY2000</u>	<u>FY2001</u>	<u>FY2002</u>	<u>FY2003</u>
July	1,394	1,432	1,480	1,580	1,439	1,583	1,538	1,747
August	1,494	1,481	1,462	1,537	1,568	1,474	1,542	1,624
September	1,324	1,465	1,240	1,341	1,506	1,328	1,604	1,579
October	1,417	1,332	1,336	1,321	1,343	1,403	1,624	1,596
November	1,168	1,181	1,251	1,262	1,287	1,262	1,421	1,292
December	1,098	1,269	1,201	1,398	1,246	1,207	1,352	1,351
January	1,094	1,139	1,172	1,237	1,151	1,148	1,293	1,257
February	1,062	1,033	1,001	991	1,101	1,075	1,220	1,130
March	1,212	1,259	1,267	1,298	1,220	1,319	1,374	1,495
April	1,403	1,227	1,237	1,256	1,204	1,329	1,479	1,472
May	1,492	1,424	1,472	1,427	1,404	1,364	1,554	1,502
June	1,456	1,323	1,451	1,405	1,426	1,478	1,677	1,529
	<b>15,614</b>	<b>15,565</b>	<b>15,570</b>	<b>16,053</b>	<b>15,895</b>	<b>15,970</b>	<b>17,678</b>	<b>17,574</b>
<b>Change from previous year:</b>	3.41%	-0.31%	0.03%	3.10%	-0.98%	0.47%	10.70%	-0.59%

<u>Month</u>	<u>FY2004</u>	<u>FY2005</u>	<u>FY2006</u>	<u>FY2007</u>	<u>FY2008</u>	<u>FY2009</u>	<u>FY2010</u>	<u>FY2011</u>
July	1,726	1,664	1,927	1,905	2,066	2,035	2,064	1,921
August	1,685	1,596	1,920	1,917	1,997	1,913	1,996	2,021
September	1,654	1,466	1,760	1,851	1,704	1,814	1,829	1,755
October	1,552	1,601	1,677	1,723	1,869	1,889	1,858	1,806
November	1,479	1,508	1,574	1,695	1,747	1,653	1,843	1,664
December	1,426	1,478	1,577	1,762	1,539	1,874	1,805	1,695
January	1,333	1,460	1,632	1,655	1,610	1,656	1,625	1,487
February	1,288	1,200	1,428	1,506	1,511	1,470	1,334	1,443
March	1,424	1,469	1,564	1,862	1,729	1,719	1,726	1,743
April	1,526	1,667	1,744	1,853	1,688	1,716	1,722	1,864
May	1,671	1,703	1,850	1,950	1,832	1,896	1,967	1,850
June	1,669	1,746	1,886	2,075	1,913	1,978	1,904	1,788
	<b>18,433</b>	<b>18,558</b>	<b>20,539</b>	<b>21,754</b>	<b>21,205</b>	<b>21,613</b>	<b>21,673</b>	<b>21,037</b>
<b>Change from previous year:</b>	4.89%	0.68%	10.67%	5.92%	-2.52%	1.92%	0.28%	-2.93%

# Grants

<b>Department of Motor Vehicles - Traffic Enforcement</b>	\$	34,569.00
<b>Department of Justice - Justice Assistance Grant - CSU supplies</b>	\$	13,406.00
<b>Historic Triangle Substance Abuse Coalition - Every 30 Minutes Program</b>	\$	1,100.00
<b>Office of Justice Programs/Bureau of Justice Administration - Bulletproof Vests</b>	\$	29,960.00
<b>Kiwanis donation - Community Services Unit Activity Books</b>	\$	400.00
<b>Department of Criminal Justice Services - tactical vests, in-car cameras</b>	\$	56,700.00
<b>Virginia Department of Emergency Management/Port Security Grant Program - Dive Team</b>	\$	71,329.00
<b>Junior Woman's Club of Williamsburg - donation to Text-A-Tip program</b>	\$	250.00
<b>Wal-Mart Distribution Center - donation for cameras</b>	\$	1,000.00
<b>National Rifle Association - donation for purchase of youth firearm safety educational materials</b>	\$	750.00
<b>Virginia Department of Criminal Justice Services - Livescan/FRED</b>	\$	18,950.00

**Total Received: \$ 228,414.00**

